



Stephen
Joseph
Theatre

Environmental Impacts

2024/25



Introduction

As part of our policy on Environmental Sustainability we publish a report annually which looks back on the previous financial year and the progress we made towards our aims. The actions detailed in our policy are:

- We will identify a range of actions to achieve a year-on-year reduction of our overall carbon footprint.
- We will identify ways of reducing the carbon impact per ticket sold for our own produced shows.
- We will work towards achieving a recognised environmental certification.

The first report was published in 2023/24. You can access all the reports [here](#).

Planned actions from our 2023/24 report – how did we do?

Install new roof insulation to around 75% of the theatre's roof	✓
Replace the current life expired air handling equipment	✓
Continue to replace legacy light fittings with energy efficient LEDs	✓
Install additional secondary glazing in Creative Engagement spaces	✓
Update the energy use audit and further work around energy efficiency as we understand the impact of new plant	✓

2024/25 in summary

In 2024/25 we were responsible for 466.43 tonnes of CO2. This is an increase of less than 1% from 465.03 tonnes in 2023/24. This is the equivalent of:



the yearly emissions from **143** average cars



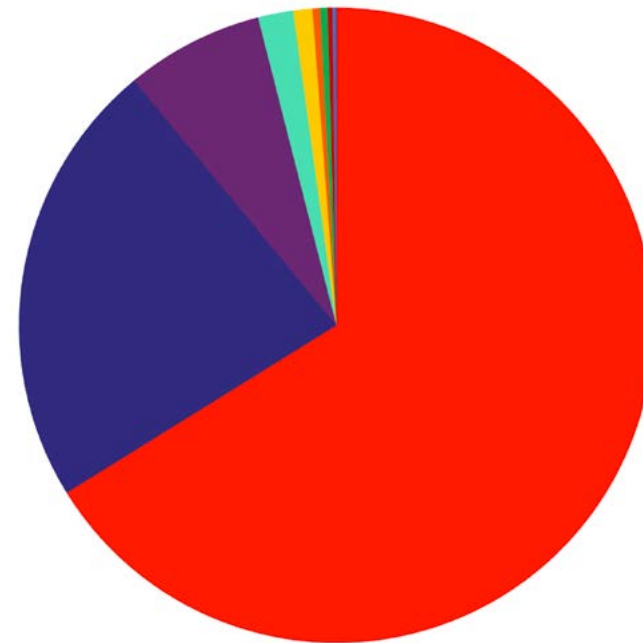
the yearly energy use of **109** average homes



19,432 propane cylinders for home barbeques

Breakdown:

	Tonnes Co2: 2024/25	Change from 2023/24
Audience travel	308.6	+10.1
Energy	106.5	-0.9
Operational waste	32.8	-13.9
Business travel	8.35	+8.35
Show power	4.57	-3.1
Fleet travel (van)	1.79	+0.17
Project material & waste	1.73	+1.06
Artist / crew travel	1.19	-0.2
Water & sewage	0.83	-0.12
Freight travel	0.07	-0.32



Audience travel:
66.2%

Energy
22.82%

Operational waste
7.0%

Business travel
1.79%

Show power
0.98%

Fleet travel:
0.38%

Project material & waste
0.37%

Artist/crew travel
0.26%

Water & sewage
0.18%

Freight travel
0.01%

Analysis

There was an increase of 3.4% in the carbon footprint of our **audience's travel**. Thanks to changes in our audience surveying we're now working with accurate data on audience travel rather than working with estimates as we were in the years up to 2023/24.

Now we have an accurate baseline we can work to reduce the carbon footprint of audience travel. A full breakdown of our audience travel data can be found opposite.

Power consumption has decreased by roughly a tonne. The saving should have been larger with measures taken in 2024/25 but was impacted by the additional power used during the phase one capital works over the winter of 2024/25 and the challenge of heating The Round auditorium while the roof was being worked on.

We should see this start to fall in 2025/26 as we benefit from the new air handling units which were installed alongside new and improved insulation.

This is a priority area for us and we have further capital plans to address this.

Waste (operational and show) has fallen by nearly 14 tonnes – this is the impact of changes made last year which include:

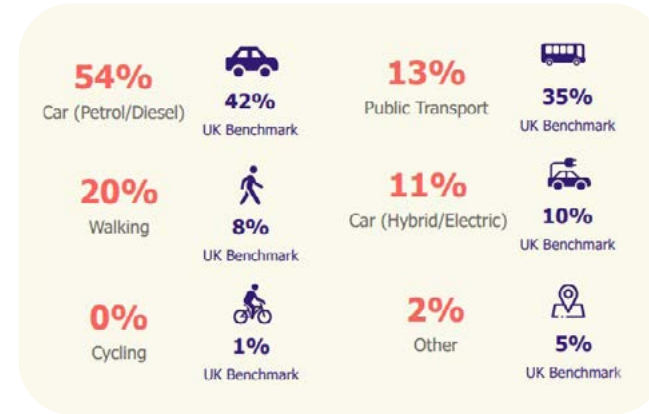
- Re-usable wine goblets
- Our onsite restaurant Eat Me (run by a separate company) increasing their bin capacity so we aren't measuring their waste alongside ours



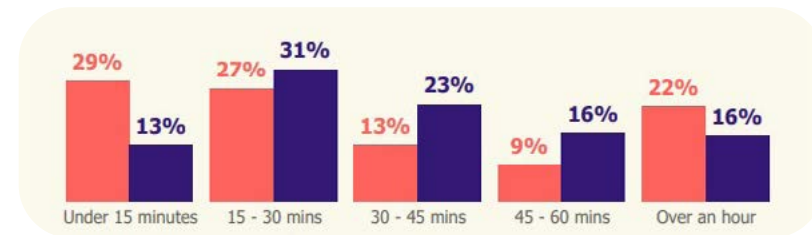
Audience travel

Our data is benchmarked against the national average for theatres and arts centres taking part in the Indigo Share survey (46 organisations).

We had 2,831 responses - these are the results:



	SJT	Benchmark
Private car (petrol/diesel)	54%	42%
Walked	20%	8%
Public transport	13%	35%
Hybrid / electric car	11%	10%
Other	2%	5%
Cycling	0%	1%



Travel time

	SJT	Benchmark
Under 30min	56%	44%
30 - 60min	22%	39%
Over 60min	22%	16%



Our data is heavily influenced by external factors such as Scarborough geography, public transport options. More of our audience use cars to get to us than elsewhere in the country (12% more) but equally more people walk to us than elsewhere in the country (12% more).

Many of the other organisations represented in the benchmark will be based in areas with much more developed public transport infrastructure e.g. London, Manchester, Sheffield, Newcastle etc.

As part of our work to decrease the carbon footprint of audiences travelling to us we are publicly lobbying for more regular trains.

Actions completed in 2024/25

Phase one of capital plan

We successfully delivered the first phase of our ambitious capital redevelopment project, modernising core infrastructure. This included:

- **Replacing and reinsulating the roof** of The Round auditorium to meet current standards (completed during the run of *Aladdin* with minimal disruption).
- Installing **modern, efficient air handling units with heat recovery**, relocated on top of The Round auditorium, allowing for easier and safer maintenance access.
- Adding **air source heat pumps** to provide heating and cooling in The Round auditorium – eliminating the use of gas in this area.



Progress on future phases

We are actively developing future phases of the project, which will:

- Replace all remaining heating, ventilation, and cooling systems.
- Reinsulate and re-cover the remaining roofs to address ongoing leaks.
- Ultimately result in **zero gas usage onsite**, fully eliminating our **Scope 1 carbon emissions**.



Improved thermal efficiency

- Completed **internal insulation work** in the **Northway offices** and **Boden Room**, reducing the need for electrical heating.
- Installed **secondary glazing** in our **Creative Engagement spaces** to further enhance insulation.

Lighting upgrades

- Continued our ongoing programme to replace outdated lighting systems with **energy-efficient LEDs** throughout the building.



Sustainable energy contracts

- Maintained our **100% renewable electricity tariff**, ensuring all electricity is purchased under a certified 100% renewable tariff (**REGO*** backed) meaning the supplier matches our usage with renewable generation on the grid.
- Chose a gas supplier offering **10% green gas**, with the remaining 90% **carbon offset**.



Sustainable productions

- We reaffirm our commitment that all **in-house productions** conform to **Theatre Green Book** standards.

Our goal is to aim for **at least Basic Standard** across all departments involved in production – details here: www.theatregreenbook.com

Theatre Green Book

The Theatre Green Book is an industry-wide initiative to work more sustainably in response to the climate crisis. It is a free resource for everyone in the performing arts, working in any role and at all scales, providing a framework for planning, best practice guidance, a measurement system and shared standards.

In preparation for our progress in 2025/26 our Production department have developed an internal policy to help us achieve our sustainability goals:



Theatre Green Book
making theatre sustainable

1. Sourcing Materials:

- i. Use existing stock or re-purpose
- ii. Borrow
- iii. Buy or hire locally
- iv. If we need to buy online, prioritise small businesses or marketplace

2. Design / Transport – sourcing and supplies:

- i. Consider environmental consequences of decision making
- ii. Are there any alternatives?
- iii. Are alternatives practical?
- iv. What will the impact be? Is it appropriate to change?

3. Encouraging designers to reuse set during the Green Section of white card meetings:

- i. Plan for future
- ii. Consider building techniques to ensure materials are available for another life
- iii. Consider modular choices which could be repurposed

- iv. Build network of charities who can re-use our builds
- v. Include disposal costs in production budgets

4. Consider preferred materials:

- i. FSC certified timber
- ii. Water based paints
- iii. Use of compressors instead of aerosol
- iv. Ban on LX tape and use plastics ties instead
- v. Rechargeable batteries
- vi. Natural fabrics over petroleum-based fabrics

5. Consider a policy of materials/equipment that we will not use:

- i. Polystyrene
- ii. Balloons
- iii. Glitter
- iv. Helium
- v. Single-use plastics

6. Include an environmental section on all toolbox and induction talks – ensuring that everybody knows that they can play their part during a production.

7. If using non-biodegradable materials – follow the below:

- i. Avoid
- ii. Reduce
- iii. Reuse
- iv. Recycle – last resort

8. Transport (Touring):

- i. Planning tours to avoid backtracking and reduce journey times
- ii. Planning the most fuel-efficient route
- iii. Travel arrangements using public transport and car sharing
- iv. Planning build of lorry to reduce number of wagons
- v. Choosing correct size of wagon for touring production size
- vi. Consider what needs to be transported and what could be sourced locally for tours

Case study: show floor recycling

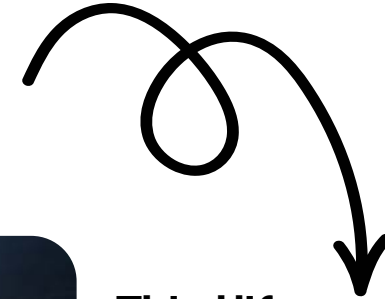
First life:

Show floor for *The 39 Steps*



Second life:

Show floor for *Beauty & the Beast*



Third life:

Donated to the Halesworth to Southwold Narrow Gauge Railway Society in East Suffolk to help protect a carriage during restoration work



Planned actions 2025/26

- Our goal is to aim for at least Basic Standard in the Theatre Green Book on all SJT productions in 2025/26.
- In 2026 we will replace 100% of our house lights in The Round auditorium with LED lights, alongside the LED theatre lights we've had since 2017. This work will result in an 83% reduction in kWh generated per year – estimated as a reduction of 1,142kWh and 257kg less carbon.



Ongoing actions

As well as our year on year progress, there are actions we take to reduce our impact which are now standard practice. These include:

- Ensuring we can **recycle as much waste as possible** within the building
- Using **100% degradable membership cards** and offering to send old ones back for recycling
- In addition, our card supplier **plants trees for each order** - [details here](#)
- Choosing a **100% renewable tariff** – meaning all electricity used on site is generated with zero emissions
- Ensure that **the printing we order is carbon neutral** by contributing to tree planting schemes across the UK
- Comitting to **use responsibly sourced FSC certified paper** where possible. This means supporting responsible forestry, preventing deforestation, ensuring fair wages, and preserving irreplaceable forest values





www.sjt.uk.com

Box Office 01723 370541

Scarborough Theatre Trust Ltd.
Registered Charity Number 253606